

FLUTE 1 (SOLO)

ONCE UPON A TIME IN THE WEST

ENNIO MORRICONE

(ARR. TOBI ZWYER)

♩ = 44

5

RIT. . . .

9

VLN. 1

15

B

CRESC.

21

RIT. . . .

C

♩ = 55

p

27

RIT. . . .

33

D

38

RIT. . . .

43

ONCE UPON A TIME IN THE WEST

ENNIO MORRICONE
(ARR. TOBI ZWYER)

♩ = 44

1 2 3 4

5

5 6 7 8

9

A **B**

♩ = 55

9 10 11 12 13 14 15 16 17 18

21

C ♩ = 55

RIT. . .

21 22 23 24 25 26

27

♩ = 66

RIT. . .

27 28 29 30 31 32

33

D

33 34 35 36 37

38

RIT. . .

38 39 40 41 42

43

43 44

ONCE UPON A TIME IN THE WEST

ENNIO MORRICONE
(ARR. TOBI ZWYER)

♩ = 44

5

A ♩ = 55 **B**

9

21

27

33

38

43

ONCE UPON A TIME IN THE WEST

♩ = 44

5

9 **A** *p* ♩ = 55

17 **B** *pp*

21 *mf* **C** ♩ = 55 *CRSC.* *RIT.*

28 *RIT.* ♩ = 66

33 **D**

38 *RIT.*

43

ONCE UPON A TIME IN THE WEST

ENNIO MORRICONE
(ARR. TOBI ZWYER)

♩ = 44

5

VLN. 1

RIT. . . .

A ♩ = 55

9

pp

B

17

mf

CRESC.

C ♩ = 55

21

RIT. . .

p

27

RIT. . . .

♩ = 66

D

33

f

39

RIT.

43

ONCE UPON A TIME IN THE WEST

$\text{♩} = 44$

5 *VLA.* *RIT.* . . .

9 **A** $\text{♩} = 55$ *pp*

17 **B** *mf* *CRESC.*

21 *RIT.* **C** $\text{♩} = 55$ *p*

28 *RIT.* . . .

33 **D** $\text{♩} = 66$ *f*

39 *RIT.*

43

ONCE UPON A TIME IN THE WEST

♩ = 44

5 Vln. 1 RIT. . . .

9 **A** ♩ = 55 pp

17 **B** mf CRESC.

21 RIT. . **C** ♩ = 55 p

28 RIT. . . .

33 **D** ♩ = 66 f

39 RIT.

43

ONCE UPON A TIME IN THE WEST

♩ = 44

5 VLA. RIT. . . .

9 **A** ♩ = 55

17 **B** *pp*

21 *mf* **C** ♩ = 55 *CRSC.* RIT. .

28 RIT. . . . ♩ = 66

33 **D** *f*

38 RIT.

43

ONCE UPON A TIME IN THE WEST

♩ = 44

5 RIT. . .

9 **A** ♩ = 55
pp

17 **B**
mf *CRESC.*

21 RIT. **C** ♩ = 55 10 RIT.

33 **D** ♩ = 66
f

38 RIT.

43

ONCE UPON A TIME IN THE WEST

♩ = 44

5

9

17

21

33

39

43

A

B

C

D

pp

mf

f

CRASC.

RIT.

RIT.

RIT.

RIT.

ONCE UPON A TIME IN THE WEST

♩ = 44

5

A ♩ = 55

B

17

C ♩ = 55

21

D ♩ = 66

33

39

43

ONCE UPON A TIME IN THE WEST

♩ = 44

5 *p* RIT. . . .

9 **A** ♩ = 55 *pp*

17 **B** *mf* RIT. . . . **C** ♩ = 55 *CRESC.*

21 *mf* RIT. . . .

27 RIT. . . .

33 **D** ♩ = 66

39 RIT. . . .

43

ONCE UPON A TIME IN THE WEST

♩ = 44

5

9 **A** ♩ = 55

17 **B**

22 **C** ♩ = 55

30 **D** ♩ = 66

36

43

ONCE UPON A TIME IN THE WEST

♩ = 44

1 2 3 4

5

5 6 7 8

9

A **B** **C**

♩ = 55

9 10 11 12 13 14 15

26

26 27 28 29 30 31 32

33

D

♩ = 66

33 34 35 36 37 38

39

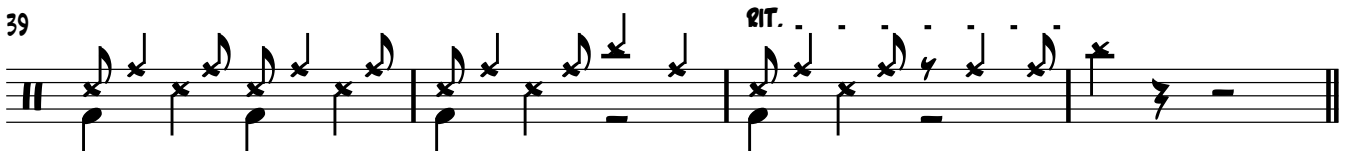
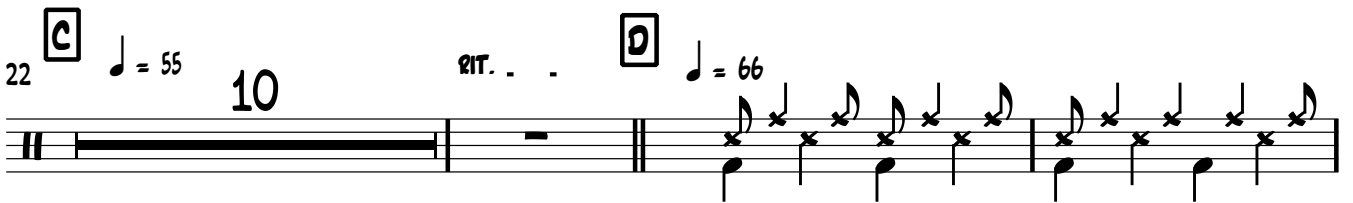
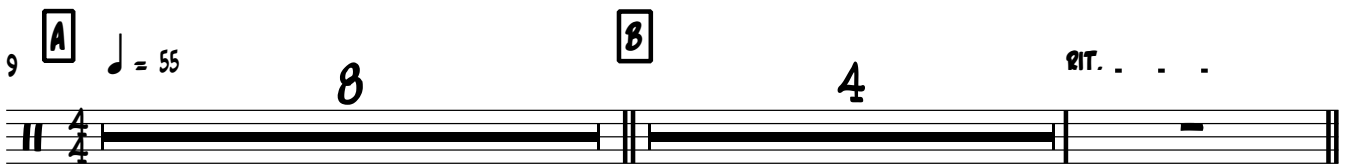
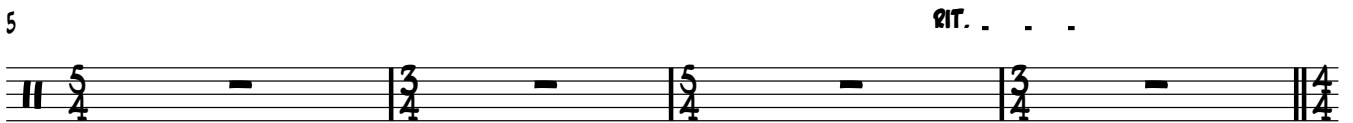
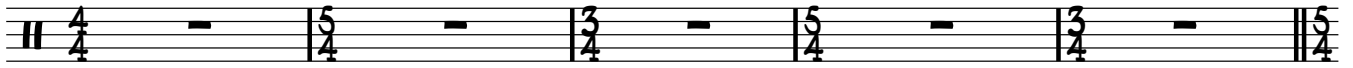
39 40 41 42

43

43 44

ONCE UPON A TIME IN THE WEST

♩ = 44



ONCE UPON A TIME IN THE WEST

$\text{♩} = 44$

5 *RIT.* **A** $\text{♩} = 55$ D F#m Bm D7/A *pp*

11 G F#m Bm F#m G Em F#m

17 **B** G#7 Gmaj7 Gm Bb7 D *mf* *CRESC.*

21 *RIT.* **C** $\text{♩} = 55$ *p*

25 $\text{♩} = 66$ *RIT.* D

29

33 **D** Eb Gm Cm Eb7 Ab Gm Cm Gm

39 Ab Bb Ebmaj7 Eb7 *RIT.* Ab Bb Eb

43 Ab Eb

